

4112-9212 This information is given as an indication. In the continual goal to improve our products, we reserve the right to make any modifications judged necessary



3 GHz TNC

N/O

S.P.6 T. SWITCH

Page  
1 / 2

OPTIONS :

### R F CHARACTERISTICS

NUMBER OF WAYS : 6  
FREQUENCY RANGE : 0 - 3 GHz  
IMPEDANCE : 50 Ohms

FREQUENCY (GHz)	0 - 3
V.S.W.R	<= 1.20
INSERT. LOSS	<= 0.20 dB
ISOLATION	>= 80 dB
AVER. POWER (*)	300 W

### ELECTRICAL CHARACTERISTICS

ACTUATOR : NORMALLY OPEN  
NOMINAL CURRENT AT 25° C (±10%) : 102 mA  
ACTUATOR VOLTAGE (Vcc) : 28V (24 to 30V) / POSITIVE COMMON  
TERMINALS : 25 pins D-SUB male connector

### MECHANICAL CHARACTERISTICS

CONNECTORS : TNC female per MIL C 39012  
LIFE : 2.000.000 cycles per position  
SWITCHING TIME (nominal voltage;25° C) : < 15 ms  
CONSTRUCTION : splashproof  
WEIGHT : < 460 g

### ENVIRONMENTAL CHARACTERISTICS

OPERATING TEMPERATURE RANGE (°C) : -40 , +85  
STORAGE TEMPERATURE RANGE (°C) : -55 , +85

(\* : average power at 25° C per RF path)

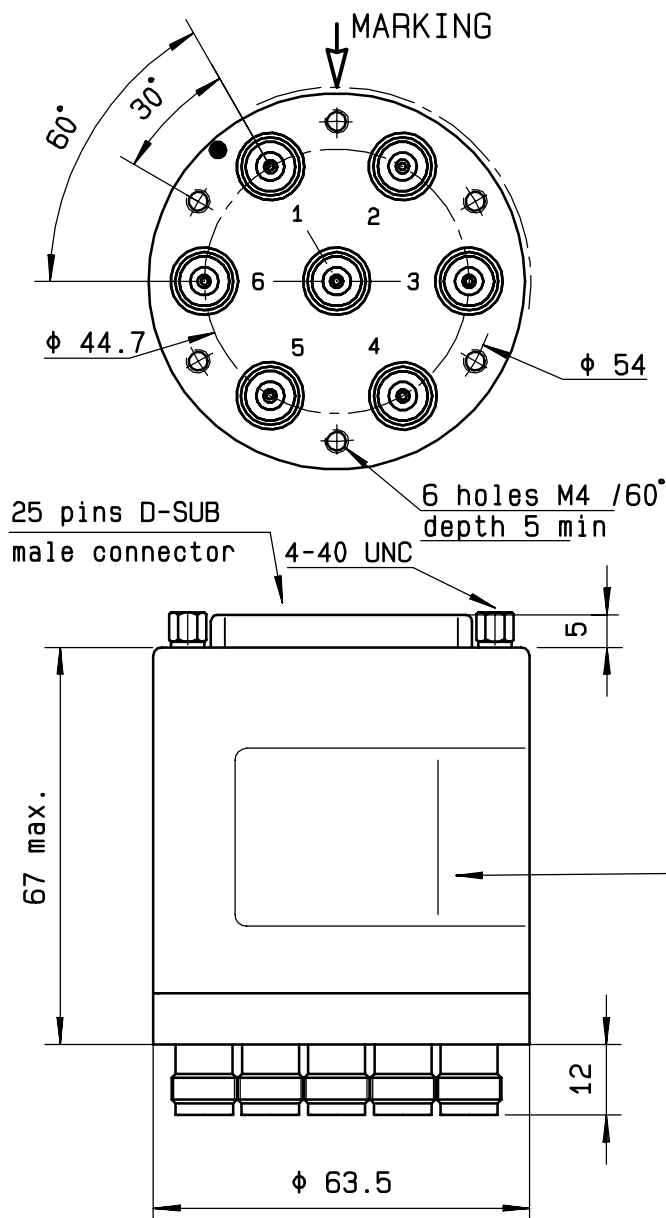
This information is given as an indication. In the continual goal to improve our products, we reserve the right to make any modifications judged necessary

# DRAWING

General tolerance:  $\pm 0,5$  mm

# R573 503615

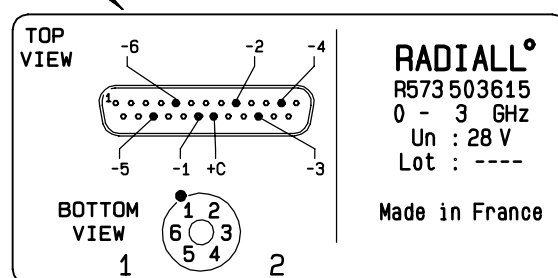
Page  
2/2



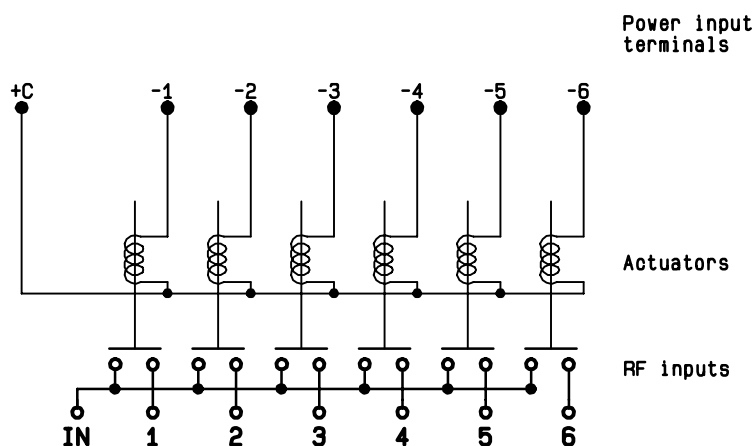
Voltage	RF continuity
+C -1	IN $\leftrightarrow$ 1
+C -2	IN $\leftrightarrow$ 2
+C -3	IN $\leftrightarrow$ 3
+C -4	IN $\leftrightarrow$ 4
+C -5	IN $\leftrightarrow$ 5
+C -6	IN $\leftrightarrow$ 6

MARKING

TOP VIEW (TERMINALS)



# SCHEMATIC DIAGRAM



ISSUE 20.Apr.01

4113-9212